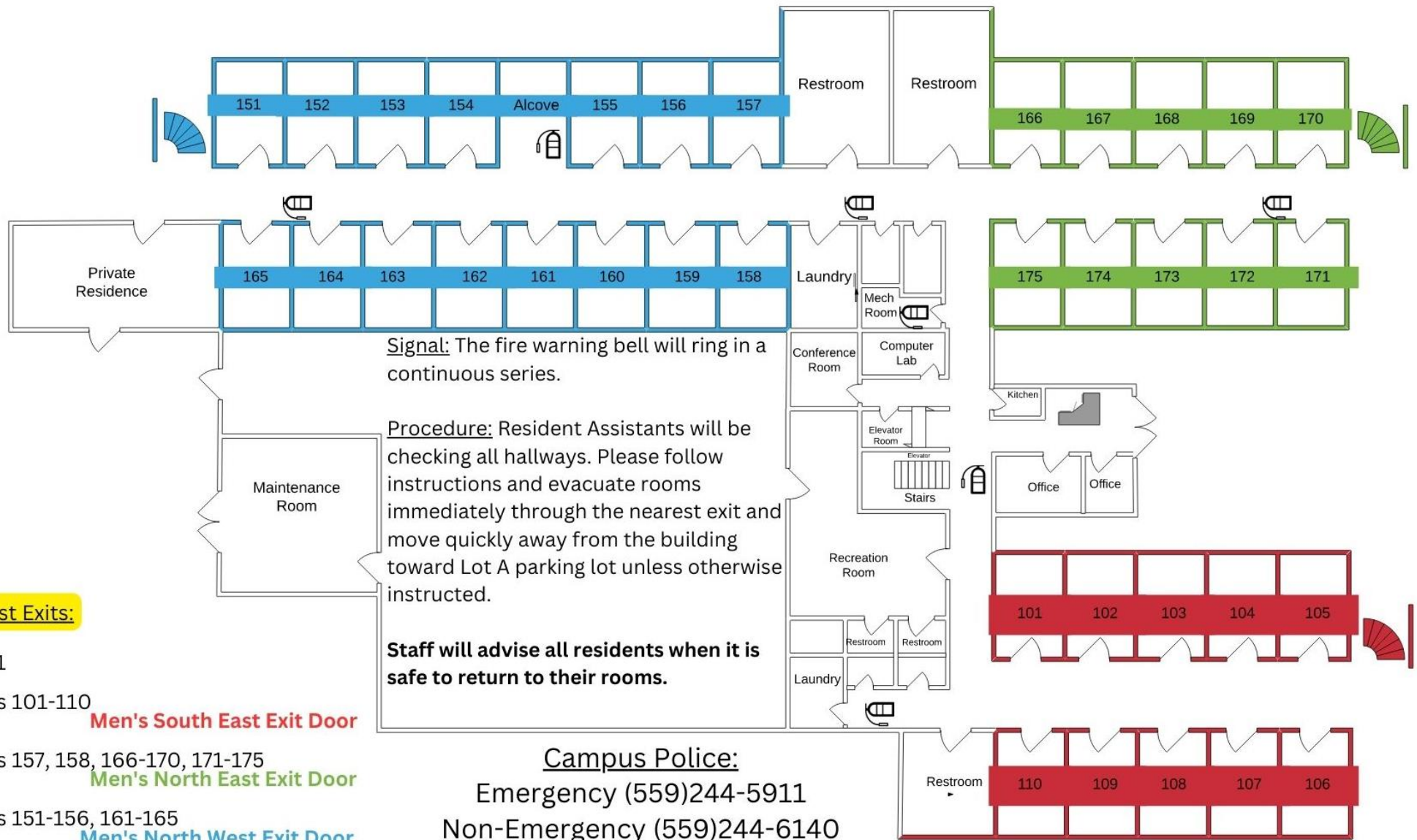


RESIDENCE HALL 1ST FLOOR FIRE EVACUATION PROCEDURE



Signal: The fire warning bell will ring in a continuous series.

Procedure: Resident Assistants will be checking all hallways. Please follow instructions and evacuate rooms immediately through the nearest exit and move quickly away from the building toward Lot A parking lot unless otherwise instructed.

Staff will advise all residents when it is safe to return to their rooms.

Nearest Exits:

- Floor 1
- Rooms 101-110 **Men's South East Exit Door**
- Rooms 157, 158, 166-170, 171-175 **Men's North East Exit Door**
- Rooms 151-156, 161-165 **Men's North West Exit Door**

Campus Police:
 Emergency (559)244-5911
 Non-Emergency (559)244-6140