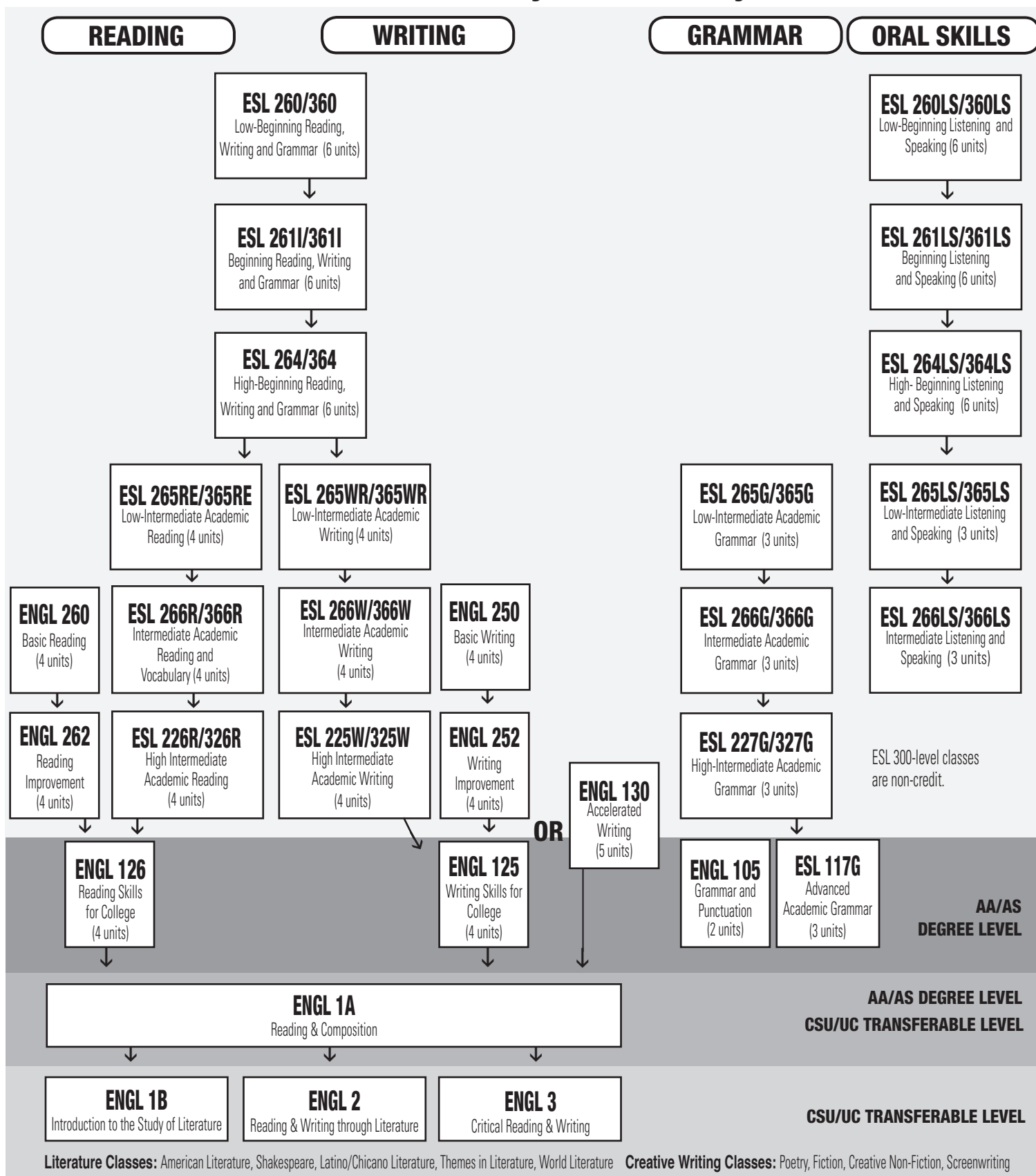


English as a Second Language (Credit* and Noncredit**) and English (Reading and Composition) Courses of Study and Pathways



ADVICE ON ENGLISH SKILL LEVEL

- Take the placement test.
- Discuss your English skill level with a counselor.
- Refer to the catalog for subject prerequisites and basic skills advisories.
- Submit official transcripts from high school and/or other colleges for proof of English prerequisites

revised 2/19/16

*200-level ESL courses, **300-level ESL courses.