



BUILDING THE FUNDAMENTALS OF STUDENT SUCCESS

PRESIDENT'S MESSAGE

The state of our college was resilient and focused this past year, as we continued to address the basic needs of our students through twelve more months of the COVID-19 pandemic. Although we decreased the number of students served last year, the college again improved the number of students reaching their educational goals through transfer and degree attainment. Reedley College also remains one of the best rural-facing colleges in California, recognized as the number one-ranked agriculture teaching program two out of the three previous years, offering other unique regional programs, such as Forestry & Natural Resources, Wildland Firefighting, Aviation Maintenance and Flight Sciences.

After experiencing a pandemic year that dramatically increased the cost of construction, Reedley will finally break ground in February 2022 on its Fine and Performing Arts, including a state-of-the-art concert and conference venue that will provide the College an important opportunity to share and celebrate our local cultures. Our Child Development Center, which also experienced significant delays, will break ground in November 2021, offering double the classroom capacity and new learning opportunities within Early Childhood Education. Our new Math & Sciences building opened in August 2021, providing modern classrooms and technology that serves both STEM and allied health-related programs.

Meanwhile, Reedley College continues to expand opportunities for local students, including collaborations with school districts for access to accelerated pathways leading to baccalaureate degrees in engineering, business and education. This past year has seen the design and deployment of tutoring resources for these pathways, launched this fall as "homework help." Reedley's Agriculture program spent the past year working with our local growers, packers and shippers to update curriculum and identify new technologies required to better support sustainable farming. Our local assemblyman wrote legislation that brought \$1M in additional funding to support expansion and improvements to our aviation programs, including moving some elements of these programs to the Reedley Airport.

Reedley College continues to contribute to the post-pandemic economic recovery of our Central Valley by educating our residents for careers in industries that provide a living wage. As a California Community College, Reedley continues to assist community members with training that helps them realize both economic and social mobility, raising the quality of life for graduates and their families.



Dr. Jerry L. Buckley, Reedley College President

(photo courtesy of Mid-Valley Times)

State Center Community College District Board of Trustees:

Annalisa Perea, President
Magdalena Gomez, Vice President
Nasreen Johnson, Secretary
Bobby Kahn, Trustee
Danielle Parra, Trustee
Deborah J. Ikeda, Trustee
Richard M. Caglia, Trustee
Dr. Douglas Houston, Interim Chancellor



Reedley College Administration:

Dr. Jerry L. Buckley, President
Dale van Dam, Vice President of Instruction
Melanie Highfill, Vice President of Administrative Services
Renee Craig-Marius, Vice President of Student Services
Juan Bedolla, Dean of Instruction
David Clark, Dean of Instruction
Dr. G. Todd Davis, Dean of Instruction
Shannon Solis, Dean of Students
Dr. Natalie Culver-Dockins, Dean of Student Success & Achievement

www.reedleycollege.edu • 995 N. Reed Ave., Reedley, CA 93654 • (559) 494-3000

Reedley College complies with all federal and state rules and regulations and does not discriminate on the basis of race, color, national origin, gender, disability, sexual orientation, religion or age. This holds true for all students who are interested in participating in educational programs and/or extracurricular school activities. Harassment of any employee/student with regard to race, color, national origin, gender, disability, sexual orientation, religion or age is strictly prohibited.

Limited English speaking skills will not be a barrier at Reedley College to participation in Vocational Education programs. Inquiries regarding compliance and/or grievance procedures may be directed to the college's Title IX Officer and/or the Section 504/ADA Coordinator.

FUNDAMENTALS OF STUDENT SUCCESS

PERSONAL CONNECTION



Making **connections personal** at Reedley College begins with outreach to prospective students, then continues through a student's pathway orientation, along with support from our student success teams, and access to resources that help our students achieve their educational goals.



FUNDAMENTALS OF STUDENT SUCCESS

ENGAGEMENT



Student **engagement** is a high priority at Reedley College, starting with extended access to information through our Online Information Center (OIC), to counselors and student support through our pathway success teams, and helping our students translate theory to practice through carefully crafted laboratory activities, internships and work study opportunities.



FUNDAMENTALS OF STUDENT SUCCESS

ADDRESSING BASIC NEEDS



The pandemic dramatically increased our students **Basic Needs**, requiring Reedley College to expand services, for example, by providing greater access to food and clothing.

Last year our college classified professionals committed to offering curb-side pickup from our food pantry, while also planning a modern, market-like food pantry environment on campus, and expanding access to our health services, including psychological counseling.

This year we have provided even more support for students in the form of additional CARES funding and childcare waivers to encourage students to return to Reedley College.



FUNDAMENTALS OF STUDENT SUCCESS

CLEAR COMMUNICATION



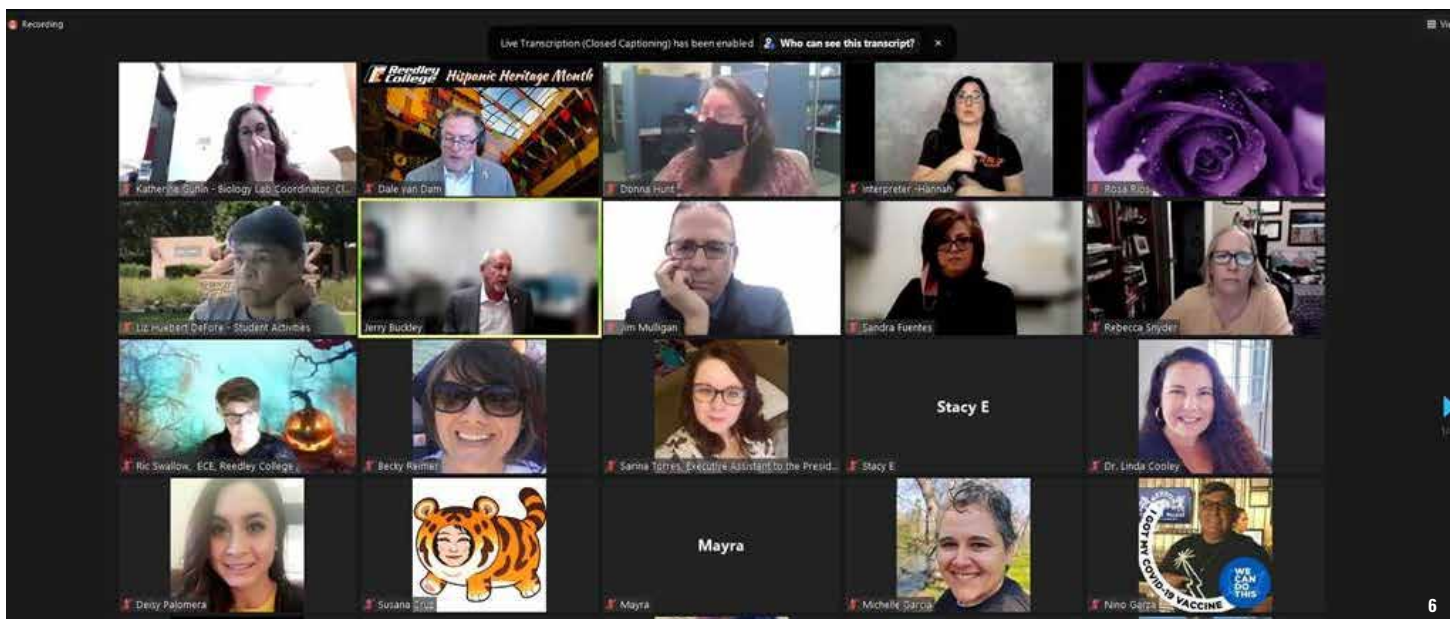
Communication at Reedley College has included both traditional and virtual methods of outreach to students, in addition to frequent townhall meetings, college hour activities and frequent emails to keep everyone informed during our complex pandemic conditions.



FUNDAMENTALS OF STUDENT SUCCESS



Flexibility can be defined as meeting students where they are, whether they select online classes and support services, or traditional face-to-face classes with lecture and laboratory experiences. This past year, pandemic conditions encouraged our faculty and staff to meet a wide range of student needs from the context of equity and inclusion, using creativity and innovation. As one example, our campus served as an access point for students without internet during the pandemic. Expanding wireless internet access to our parking lots allowed students to connect and participate in online classes from their cars. Reedley College also created a reciprocal agreement with our local high school district to serve the greatest number of students impacted by this “digital divide.”



THE STUDENT EXPERIENCE



Alejandra Reyes Enriquez and her family came to this country 10 years ago to build a better future. She wanted to improve her English so she could help her 9-year-old daughter with her homework. This motivated her to enroll in English as a Second Language (ESL) classes at Reedley College in 2017, and in 2018, she earned her high school diploma and enrolled in Business Administration classes. She would not allow anything to keep her from her goal. Her husband and children together with Reedley College teachers and counselors supported her all the way.

What started out as a desire to simply learn a new language, turned into a desire to build a better future for herself and her family. It is never too late to achieve your goals and change not only your story, but your family's story for generations to come.

PROGRAMS OF STUDY

Reedley College offers over 160 different programs of study. Students can earn Associate in Arts for Transfer (AA-T) degrees, Associate in Science for Transfer (AS-T) degrees, Associate in Arts (AA) degrees, Associate in Science (AS) degrees, Certificates of Achievement, Certificates of Completion, or Certificates in specializations.

ASSOCIATE DEGREES FOR TRANSFER

- Administration of Justice
- Agriculture Animal Science
- Agriculture Business
- Agriculture Plant Science
- Art History
- Biology
- Business Administration
- Chemistry
- Communication Studies
- Early Childhood Education
- Economics
- Elementary Teacher Education
- English
- History
- Kinesiology
- Mathematics
- Music
- Philosophy
- Physics
- Political Science
- Psychology
- Sociology
- Spanish
- Studio Arts

CAREER AND TECHNICAL EDUCATION

- Accounting
- American Sign Language
- Animal Science
- Automotive Technician
- Aviation Maintenance
- Business Administration
- Child Development
- Criminology: Law Enforcement & Corrections
- Dental Assisting
- Flight Science
- Forestry/Natural Resources
 - Backcountry Skills
 - Wildfire Resources Supervisors
 - Wildland Fire Advancement
 - Forest Surveying Technology
 - Forestry Technician Fire Suppression
- Recreation and Interpretation
- Health Care Interpreter
- Information Systems
- Manufacturing Maintenance Mechanic
 - Manufacturing 1
 - Welding Technology
 - Welder
 - Machinist
- Mechanized Agriculture
 - Agricultural Mechanics
 - Equipment Technician Level I and II
 - Medium/Heavy Duty Truck
- Nursing Assistant Training
- Office Technology -Medical/Administrative Assistant
 - Receptionist
- Plant and Soil Science
 - Irrigation, Fertility & Pest Management Technician
 - Pest Control Advisor
 - Plant Protection Intern
 - Production Agriculture Technician



1,646

course sections offered in 2020-2021

82%

average course retention

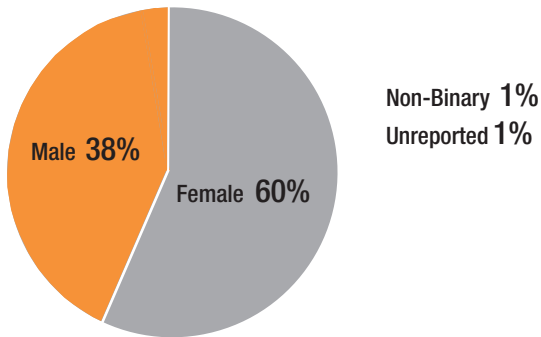


987

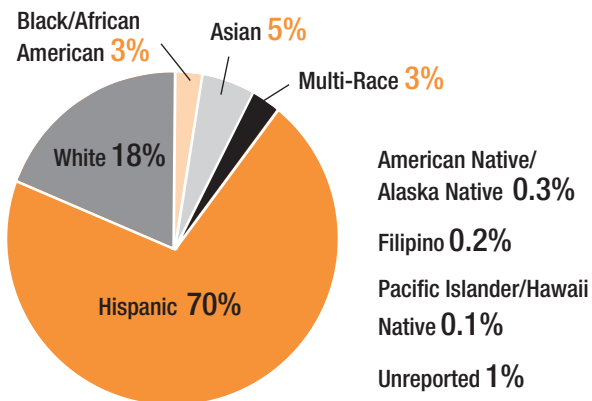
degrees awarded

BY THE NUMBERS

STUDENT GENDER



STUDENT ETHNICITY



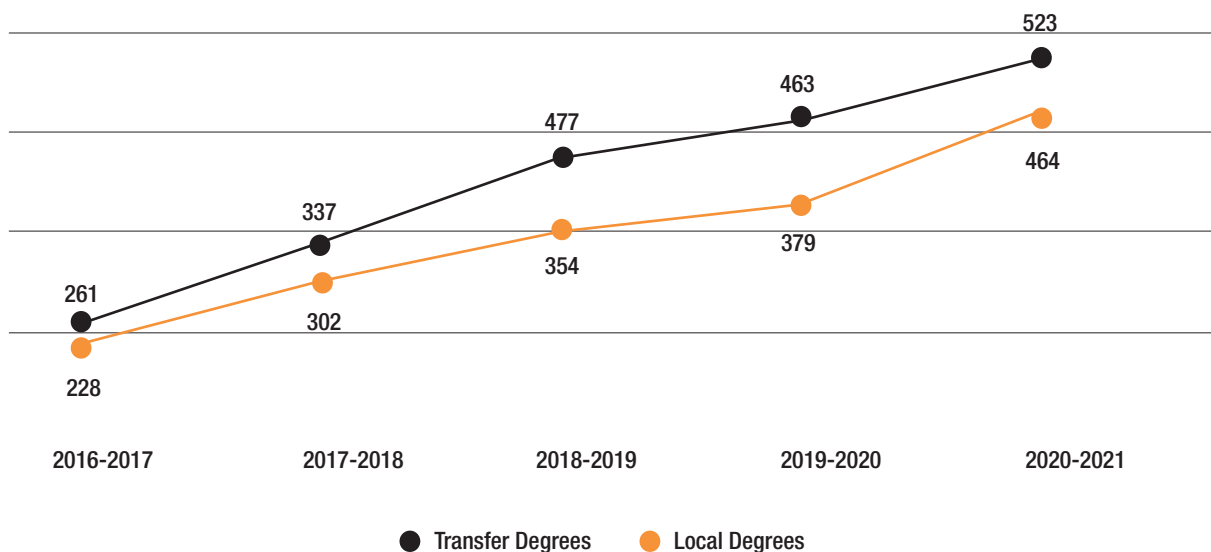
Students Served

12,015

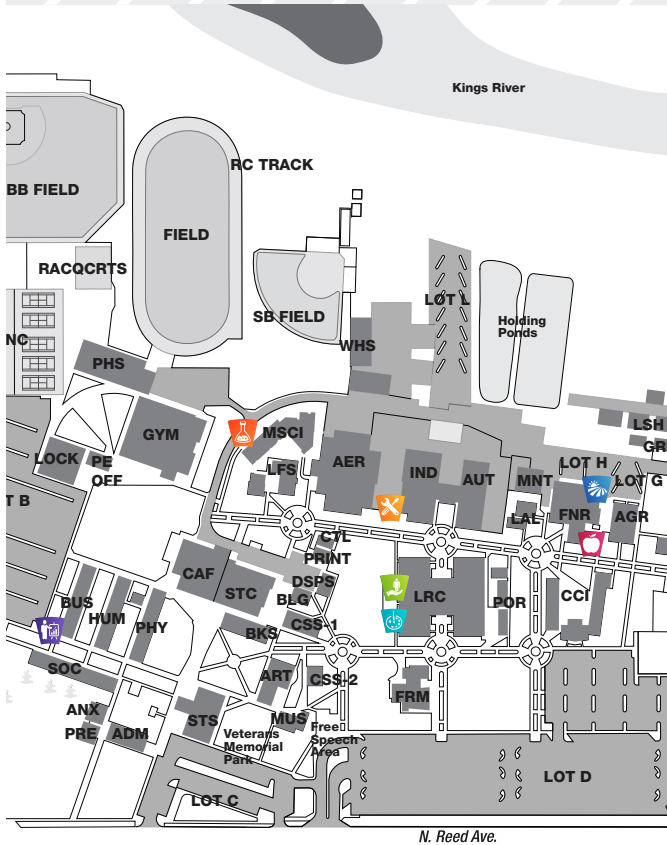
2,316

Student Awards

STUDENT AWARDS



FACILITIES UPDATE



Reedley College continues to grow by developing new facilities, in addition to allocating existing campus resources to support Student Success Teams in "Pathway Hubs" located near the pathways, academic programs and students that they support.



SCHOLARSHIPS

The State Center Community College Foundation and Reedley College Foundation are both 501 (c) (3) entities and continue to play a key role in financing higher education through support of the campuses and scholarships. These foundations, with the help of partnering local business, community groups and alumni, provide scholarships to deserving students attending Reedley College. For the 2020-2021 academic year, 97 students were awarded 189 scholarships from 128 donors to help pay for higher education, totaling over \$105,000. As we continue to grow and foster the needs of today's students, we invite you to become part of our foundations. Every dollar contributed to these foundations is not only an investment in our community, but to our future. Please mail your contribution to State Center Community College Foundation at 1171 Fulton Street, 2nd Floor, Fresno, CA. 93721 or to the Reedley College Foundation at P.O. Box 227, Reedley, CA



HISTORY

- Reedley Junior College was established in 1926 at Reedley High School.
- The college administration building constructed in 1936.
- Reedley College was re-named in 1946, dropping the word "Junior."
- Negotiations for a new college location at the Thomas Law Reed Ranch began in the late 1940's.
- The college moved to its present 420-acre site in September 1956.
- Reedley College and Fresno City College joined to form the State Center Community College District in 1964.
- Classes were next offered at satellite education centers in the communities of Dinuba, Easton, Fowler, Kingsburg, Parlier, Sanger, and Selma.
- The college's name was changed to Kings River Community College in 1980 to better reflect its service area.
- The name Reedley College was restored in 1998.



Reedley College has developed into an essential component of higher education in the central San Joaquin Valley over the past 95 years, offering over 67 areas of study taught by approximately 178 full-time and 400 part-time faculty. As a comprehensive college, Reedley is always striving for institutional excellence by offering rigorous academic programs, cutting-edge career technical programs, and extensive online programming.